

See discussions, stats, and author profiles for this publication at: <https://www.researchgate.net/publication/309653105>

# Experimental mammalian Escherichia coli K1 meningitis

Article in *IOSR Journal of Pharmacy and Biological Sciences* · January 2014

DOI: 10.9790/3008-09412125

---

CITATIONS

0

READS

14

1 author:



[Sura Ihsan Abed Jabuk](#)

University of Babylon

13 PUBLICATIONS 2 CITATIONS

[SEE PROFILE](#)

Some of the authors of this publication are also working on these related projects:



The Antimicrobial Effect of Commercial Available Local Brand of Toothpastes Against Some Dental Caries Microorganisms [View project](#)



gingivitis [View project](#)

## Experimental mammalian *Escherichia coli* K1 meningitis

<sup>1</sup>Qasim N. O. Thewaini , <sup>2</sup>Sura I. A. Jabuk

<sup>3</sup>Dallal M. M. Ishwalyia

University of Babylon, College of Science , Department of Biology Hilla, Iraq.<sup>1,2,3</sup>

---

**Abstract:** *Escherichia coli* (*E. coli*) is the most common gram-negative organism causing meningitis during the neonatal period. Neonatal meningitis due to *E. coli* K1 is a serious illness with unchanged morbidity and mortality rates for the last few decades. The mechanism involved in the pathogenesis of *E. coli* meningitis remains unclear. Experimental studies with animal models have given new insights into its pathophysiology during the acute phase of the disease . *E. coli* strain originally isolated from the Cerebrospinal fluid of a child with 20 days old was complaining acute meningitis. In the present work, we describe in detail a simple, reproducible and efficient method to induce *E. coli* meningitis in mice by using the three route (intrapretonium , intravenous, oral) of infection . *E. coli* were recovered of same characters of the original isolate used for preparing the infective dose. The histopathological changes found in the experimentally infected mice we can conclude induce meningeal thickening , neutrophils infiltration , hemorrhages and leukocyte infiltration in brain.

**Key word:** bacterial Meningitis , Cerebrospinal fluid, *Escherichia coli* k1, histopathology

---

### I. Introduction

Bacterial meningitis is recognized as one of the leading causes of infection-related death, and this disease still continues to be a significant health concern (1). Bacterial meningitis is a fatal and serious infection of the central nervous system (CNS) (2). The underlying pathophysiological mechanisms implicated in the development of meningitis are quite complex and remain poorly understood . Bacterial meningitis is associated with high mortality and morbidity, even when treated with antibiotics(3).

The mortality occurs in 25% to 35% of all patients, and long-term neurological and neuropsychological sequelae are reported to affect up to 50% of survivors(4). These complications include intracranial hypertension caused by brain edema or hydrocephalus, arterial and venous cerebrovascular alterations (cerebral ischemia, venous thrombosis), intracranial hemorrhage, mental retardation, focal neurological deficits, hearing impairment, and systemic spread of bacteria leading to septic shock and multiorgan failure (5).

*Escherichia coli* K1 is the most common cause of meningitis in premature infants (46%), whereas it is the second most common agent in full term neonates (15%) (6). Mortality rates of 5% are recorded in children in the developed world, but these rise to 30% in developing countries (7). *E. coli* K1 causes meningitis in neonates, which remains a significant problem for the last few decades with case fatality rates ranging from 5 to 40% of infected neonates (8). Despite treatment with advanced antibiotics, up to 30% of survivors exhibit neurological sequelae such as hearing impairment, mental retardation, and hydrocephalus. Furthermore, due to the emergence of antibiotic resistant strains, mortality rates may significantly increase in future(9).

The crossing of the mucosal epithelium and the invasion of small sub epithelial blood vessels by *E. coli* K1 represent critical early steps in the pathogenesis of meningitis. During initial colonization, *E. coli* K1 encounters several host defense mechanisms such as complement, neutrophils, and MØ on its path to the blood-brain barrier (BBB). However, very little is known about the mechanisms by which *E. coli* K1 finds a niche to avoid these host defenses (10).

The emergence of multi drug resistant *E. coli* K1 has further increased the incidence of these infections. (11). Numerous mediators have been implicated in the complex pathophysiologic processes of *E. coli* K1 meningitis such as inflammatory cytokines, arachidonic acid metabolites, platelet-activating factor, and nitric oxide (NO) (7).

A recent surge in antibiotic resistant strains of *E. coli* K1 may significantly increase the mortality and morbidity rates. In addition, the prognosis of meningitis is difficult until the bacteria reach the cerebrospinal fluid (CSF), by which time greater amounts of proinflammatory cytokines are circulating in the blood and the progression of brain damage has begun (12). In the present work a report on case of *E. coli* K1 meningitis in newborn infant and experimental pathogenecity in mouse model were made.

## II. Materials & Methods

### 1-Patient:

The *E. coli* strain originally isolated from the CSF of a child with 20 days old was complaining acute meningitis with subtle signs such as fever, lethargy, vomiting and altered mental status ranging from sleepiness to coma (13). One tube of CSF was collected for culture, Bacteria were grown overnight on blood agar plates, harvested in 0.9% saline and stored at -80°C. Frozen aliquots were used for the experiments and diluted with saline to the required bacterial concentration (14).

### 2-Clinical bacteriology:

Each specimen was immediately inoculated on blood agar, nutrients agar, MacConkey's agar. All plates were incubated aerobically at 37 °C for 24-48 hours. Gram stain of smears of each specimen were done after incubation on plates. Morphologies of these isolates were studied (15). Identification of bacterial isolates was confirmed by using Api 20 E test system (Biomérieux-France) and serological by specific antisera.

### 3-Bacterial inoculum preparation

Bacterial inoculum was prepared from a pure culture according to *E. coli* was grown in nutrient agar at 37°C for 24 hours under aerobic condition. By using phosphate buffer saline prepare bacterial suspension was adjusted with Macfarland tube No. 5 to a concentration of approximately  $1 \times 10^5$  CFU/ml (14).

### 4-Experimental *E. coli* infection of mouse

Twelve BALB/c mice were 7-8 weeks old, when challenged. Body weight was 25-30 g. They were obtained from animal house, College of science, Babylon University. The mice were housed in an air conditioned room with 12 hour light, 12 hour dark cycle. They were fed a commercial rodent diet with free access to drinking water. Twelve mice were divided into three groups.

First group: consisted of three mice were each inoculated orally with 0.5ml of  $10^5$  CFU of bacteria suspension. Control mice received 0.5ml of phosphate buffer saline through the same route.

Second group: consisted of three mice were each injection peritoneum with 0.5 ml of  $10^5$  CFU of bacteria suspension. Control mice received 0.5ml of phosphate buffer saline through the same route.

Third group: consisted of three mice were each injection vein with 0.5 ml of  $10^5$  CFU of bacteria suspension. Control mice received 0.5ml of phosphate buffer saline through the same route (16,17,14).

### 5-bacterial reisolation:

swab samples obtained aseptically from the brain. These biopsy samples were homogenized by using a sterile lancets and needles. These homogenized tissues were plated onto the *E. coli* selective medium, and incubated at 37°C for 24 under aerobic condition. Growing bacteria were identified by Gram staining, morphology and other biochemical tests (16).

### 6-Tissue preparation

Histological section preparation of infected animals was achieved according to (18) method which includes Fixation, Dehydration, Clearing, Impregnation, Embedding and blocking, Section cutting and Staining.

## III. Result

### 1-Bacteriology:

**Colony morphology:** small 2–3 mm diameter, circular in shape, regular margin, flat, smooth, lactose fermenting on MacConkey's agar, Green metallic sheen on Eosin methylin blue.

**Gram staining:** Gram-negative rods uniformly stained with no particular arrangement. motile bacteria in hanging drop preparation.

**Biochemical reactions:** Oxidase negative, catalase positive, glucose fermentation, and gas production, reduces nitrates to nitrites, indole positive, methyl red positive, Voges–Proskauer negative, citrate not utilized, lactose fermenter, triple sugar iron agar showed slant yellow with gas production, lysine decarboxylase test positive.

**serological tests:** The result shows the isolated *E. coli* belong to the serotype (O18: K1: H7).

### 2- pathogenicity:

Mouse meninges model was made. it was susceptible to *E. coli* k1 by this model causes acute and subacute meningitis through three routes (oral, peritoneum, vein) with in 14 days post injection table -1-.

**Table -1- clinical features of experimentally infected mouse**

Days post IV, IP, Orally	Manifestation
<b>1-Gross</b>	
3	Fever
5	Fever, neurological signs
7	Subtle signs, neck & legs were flexed
14	Altered mental status & neurological signs
<b>2- postmortem</b>	
Gross	Visceral organ, meningeal thickening with brain congestion

At the 5,10 and 14 post infection the CSF culture were positive to *E.coli* as pure scanty to moderate growth. On autopsy another days 5,10,14 post infection and positive to *E.coli* (table 2).

**Table -2-The reisolation & growth of *E.coli* k1 pathogens isolated from CSF**

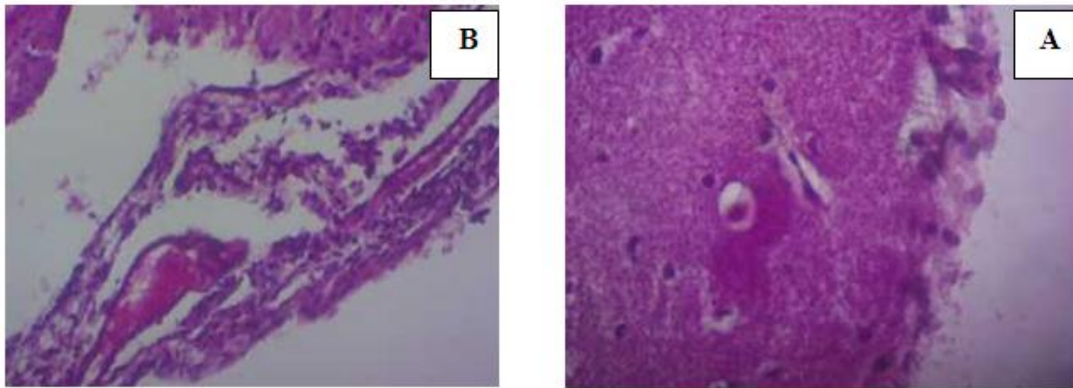
Route of injection	Growth characteristic /days		
	5	10	15
Oral	N.G	N.G	Scanty
Vein	Scanty	Moderate	Moderate
Peritoneum	N.G	Scanty	Moderate
Control	N.G	N.G	N.G

N.G: No growth

**3- Histopathology :**

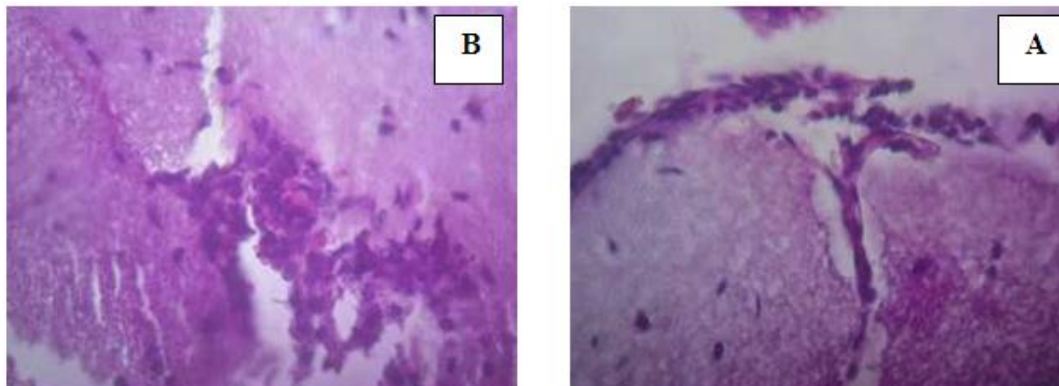
Tissue from *E.coli* K1 infected mice after 15 day post infection were prepared, stained, mounted and examined as following:

**1- peritoneum route:**



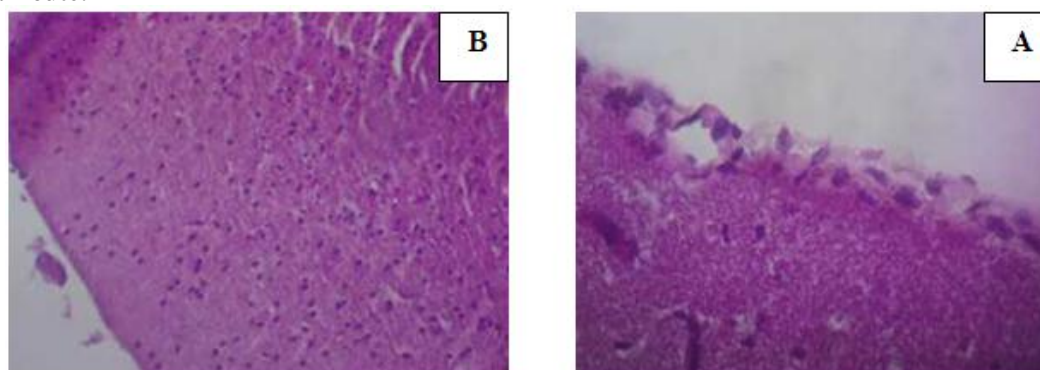
**Figure-1-Cross section in brain of mice injection in peritoneum with *E.coli* showed (A):Meningeal thickening and neutrophil infiltration . (B) sub-arachnoid meningeal inflammation stained with hematoxylin and eosin (H&E) , Magnification power 40**

**2- intravenous route:**



**Figure -2-Cross section in brain of mice intravenous injection with *E.coli* showed (A) Meningeal thickening and neutrophil infiltration (B) hemorrhages and leukocyte infiltration stained with hematoxylin and eosin (H&E) Magnification power 400X .**

### 3- Oral route:



**Figure -3 -(A) Cross section in brain of mice oral injection with E.coli showed Meningeal thickening and neutrophil infiltration (B) Cross section in brain of mice injection with phosphate buffer saline (control) stained with hematoxylin and eosin (H&E) Magnification power 400X .**

### IV. Discussion

The nature of the infection and the characteristic of the pure isolate are consistent with *E.coli* k1 (6). Acute bacterial meningitis is most often caused by *E.coli* & *Streptococcus pneumoniae* in neonates (19).

*E.coli* were recovered of same characters of the original isolate used for preparing the infective dose . At the day 10& 14 post infection the CSF were positive for *E.coli* as pure scanty to moderate growth . Similar findings were reported by(16).

On autopsy at the day 14 post intrapretoneal , oral & vein inoculation in mice induce meningeal thickening , neutrophils infiltration & vascular congestion in brain. These pathological aspects in mouse model are similar to those observed in *E.coli* k1 infected human and another animals models (20,21)

According to those bacteriological revolution and histopathological changes found in the inflamed meninges of experimentally infected mice we can conclude this changes closely resemble those found in *E.coli* k1 infected human meningitis .Therefore the mice may represent useful model for understanding the pathogenesis of *E.coli* related acute human meningitis . Also this work give approve for intravenous, intrapretoneal and oral routes of infection in mice.

### References

- [1]. Nathan, B. R. & Scheld, W. M. (2000) New advances in the pathogenesis and pathophysiology of bacterial meningitis. *Curr. Infect. Dis. Rep.* 2: 332–336.
- [2]. Somand, D.& Meurer, W.(2009). Central nervous system infections. *Emerg. Med. Clin. North Am.* 27:89–100.
- [3]. Sinner, S.W.& Tunkel, A.R.:(2004) Antimicrobial agents in the treatment of bacterial meningitis. *Infect. Dis. Clin. North Am.*, 18:581–602.
- [4]. Tebruegge, M.& Curtis, N.(2008). Epidemiology, etiology, pathogenesis, and diagnosis of recurrent bacterial meningitis. *Clin. Microbiol. Rev.*
- [5]. Scheld, W.M.; Koedel, U.; Nathan, B.& Pfister, H.W.(2002). Pathophysiology of bacterial meningitis: mechanism(s) of neuronal injury. *J. Infect. Dis.* 186: 225–233.
- [6]. Bonacorsi, S.& Bingen, E. (2005). Molecular epidemiology of *E. coli* causing neonatal meningitis. *Int. J. Med. Microbiol.* 295:373–381.
- [7]. Houdouin, V.; Bonacorsi, S.; Bidet, P.; Blanco, J.; De La Rocque, F.; Cohen,R.; Aujard, Y.& Bingen, E.(2008). Association between mortality of *E.coli* meningitis in young infants and non-virulent clonal groups of strains. *Clin. Microbiol. Infect.* 14:685–690.
- [8]. Stoll, B.J.; Hansen, N.; Fanaroff, A.A.; Wright, L.L.& Carlo, W.A. (2002). Changes in pathogens causing early-onset sepsis in very-low-birth-weight infants. *N. Engl. J. Med.* 347: 240–247.
- [9]. Prasadarao, N.V.; Blom ,A.M.; Villoutreix, B.O.& Linsangan, L.C. (2002) A novel serum resistance of *E. coli* K1. *J. Immunol.* 169: 6352–6360.
- [10]. Wooster, D.G.; Maruvada, R.; Blom ,A.M& Prasadarao, N.V. (2006). Logarithmic phase *E.coli* K1 efficiently avoids serum killing by promoting C4b-mediated C3b and C4b degradation. *Immun.* 117: 482–493.
- [11]. Bizzarro, M.J.; Dembry, L.M.; Baltimore ,R.S.& Gallagher, P.G.(2008). Changing patterns in neonatal *E. coli* sepsis and ampicillin resistance in the era of intrapartum antibiotic prophylaxis. *Pediatrics* .121:689–696.
- [12]. Dubois, D.; Prasadarao, N.V. ; Mittal, R.; Bret, L.; Roujou-Gris, M. & Bonne, R. (2009). The emergence of CTX-M-producing *E.coli* K1 changes the paradigm of virulence and antibiotic multi-resistance. *Emerg. Infect. Dis.* 15:1988–1990.
- [13]. Kumar, D.; Amit, K.S.; Mohammad, R. A. and Yogesh, C.(2014). Antimicrobial Susceptibility Profile of Extended Spectrum  $\beta$ -Lactamase (ESBL) Producing *E. coli* from Various Clinical Samples. *Infect.Dis.: Res.and Trea.* 7 : 1–8.
- [14]. Ribes , S. ; Tanja, M.; Martina, O.; Sandra, R.; Hana, J.; Uwe-Karsten, H.; Stefan, N. and Roland, N.(2014). Intrapertoneal prophylaxis with CpG oligodeoxynucleotides protects neutropenic mice against intracerebral *E.coli* K1 infection *Journal of Neuroinflammation* . 11(14)1-11.
- [15]. Assegid, M.; Johannes, G.; Gottfried, U.; Christophine, N.; Kennedy, K.; Lazarus, I.; Francis, K.; Christopher, N.; David, M.; Mohan, P. J.and Evans, S. (2013). Antimicrobial sensitivity patterns of cerebrospinal fluid (CSF) isolates in Namibia: implications for empirical antibiotic treatment of meningitis *J. of Pharma.Polic.and Prac.* 6(4):1-10.

- [16]. Kelly, A.; Tivendale, C. M. ; Logue, S.; Kariyawasam, D.; Jordan, A. ; Hussein, G.; Li, Y.W. and Lisa, K. N. (2010). Avian-Pathogenic E. coli Strains Are Similar to Neonatal Meningitis E. coli Strains and Are Able To Cause Meningitis in the Rat Model of Human Disease. *Ame. Soc. for Microbiol.*78(8) 3412–3419 .
- [17]. Val, T.; Hill, S.M.; Townsend, R. S.; Arias, J . M.; Jenabi, I.G. ; Hiroyuki S. and Julie, L. (2004). Dependent E.coli K1 Interactions with Professional Phagocytes Are Important for Early Systemic Dissemination of Infection in the Neonatal Rat. *Amer. Soc.for Microbiol.* 72(1):478–488.
- [18]. Mohan, H. (2007). *Pathology Practical Book*. 2<sup>second</sup> ed. Medical publisher(P) LTD, New Delhi ,p: 1-15
- [19]. Denis, G.; Oliver, S.; Martin, G. T. & Stephen L. L. (2007) An infant mouse model of brain damage in pneumococcal meningitis. *Acta Neuropathol* 114:609–617.
- [20]. Ke Zhang, W. ; Qiang, L. ; Wen-Gang, F.; Li, Z.; De-Shu, S. and Yu-Hua, C. (2009). Tentative identification of glycerol dehydrogenase as E. coli K1 virulence factor cglD and its involvement in the pathogenesis of experimental neonatal meningitis *Med. Microbiol. Immunol.* 198:195–204.
- [21]. Mittal, I. G .;Kerstin, A. ; G. and Nemani, V. P.(2010). Inhibition of Inducible Nitric Oxide Controls Pathogen Load and Brain Damage by Enhancing Phagocytosis of E. coli K1 in Neonatal Meningitis. *The Ame. J. of Patho.*, 176( 3): 1292 -1305.