



/ / / /

---

---

## **Constructional Evaluation of Primary Schools Buildings in Al-Hilla City**

### **Abstract:**

The primary schools buildings are considered from the most important features of the basic items in any country, which aid in evaluation and development, in which we put our effort to take care and give it the needed consideration. Therefore it demands continues research which is the best type of help in the evaluation as well as development as to serve the evaluation of teaching series in our country.

This research aims to evaluate the building of the primary schools in Al-Hilla city according to the construction, function and diagnoses of the construction problems that result from execution or the design or miss using by giving the incomplete solutions to get rid of these obstacles and its treatments.

In order to achieve this aim, data collection have been made from information that have been obtained from some literatures about evaluation of the primary schools buildings, in addition to other information that has been obtained from field survey for the buildings of the schools in Babylon governorate, alongside collective and personal

interviews with specialist from teachers as well as administration, besides collecting data about technical and engineering side by giving important engineering ideas, and others which are really in touch with the concern matter.

Results of data analysis have showing many negative points exist in the schools buildings, and it is assured by the results of field survey hence the diagnoses is completed by the construction problems and more clarity. One of them the absence of the periodic maintenance for schools, as well as the absence of the special staffs and sub-staffs that under takes these responsibilities.

(

((عوض، ٢٠٠٥)).

)

( )

((عوض، ٢٠٠٥))

((كركوش، ١٩٦٥))

( )

( )

( البراك، ١٩٨٥ )

( )

( )

((عوض، ٢٠٠٥)).

( )

)

((المرزوق، ٢٠٠٨)).

<sup>1</sup> الكنتايب : ( الملا ) كانت مدارس ولكنها مؤلفة من غرفة واحدة لا تحتوي على الكراسي والمنضد ولا تحتوي المراجع والكتب التربوية ، فكانت هذه المدرسة مجهزة بالحصران والبسط التي يجلس عليها المعلم وتلامذته ومساعد المعلم ولا توجد في تلك الغرفة سوى نسخ من القرآن الكريم وبعض أدوات (( التأديب )) كالخيزران والفلقة . ( الحمداني و عباس ، ١٩٨٢ )

.(UNESCO,1996)

( )

( )

( )

(Google

Earth)

-: (

-: (

-: (

-:

:

.( )

-

(

(



البيانات الكاملة للمباني المنتجة

| ت  | سنة التشييد | عدد الواجهات | عدد الطلاب لكل وجبة |      |      | عدد الوجبات | سنة التشييد | عدد |
|----|-------------|--------------|---------------------|------|------|-------------|-------------|-----|
|    |             |              | ٣                   | ٢    | ١    |             |             |     |
| ١  | ١٩٥٨        | ٣            | ٣٢٠                 | ٢٨٠  | ٤١١  | ١٩٥٨        | ١           |     |
| ٢  | ١٩٨٨        | ٢            | -                   | ١٤٠٠ | ١٥٠٠ | ١٩٨٨        | ٢           |     |
| ٣  | ١٩٧٢        | ١            | -                   | -    | ٣٥٣  | ١٩٧٢        | ٣           |     |
| ٤  | ١٩٦٣        | ٢            | -                   | ٦٥١  | ٦١٠  | ١٩٦٣        | ٤           |     |
| ٥  | ١٩٦٦        | ٢            | -                   | ٤٠٦  | ٥٤٣  | ١٩٦٦        | ٥           |     |
| ٦  | ١٩٨٩        | ٢            | -                   | ٥٢٠  | ٤٥٨  | ١٩٨٩        | ٦           |     |
| ٧  | ١٩٧٣        | ٢            | -                   | ٢٤٦  | ٢١٨  | ١٩٧٣        | ٧           |     |
| ٨  | ١٩٣٦        | ٢            | -                   | ٨٥٠  | ٩٥٠  | ١٩٣٦        | ٨           |     |
| ٩  | ٢٠٠٦        | ٢            | -                   | ٦٣٢  | ٥٠٠  | ٢٠٠٦        | ٩           |     |
| ١٠ | ١٩٦٢        | ٢            | -                   | ٤٦٠  | ٤٦٠  | ١٩٦٢        | ١٠          |     |
| ١١ | ٢٠٠٠        | ٢            | -                   | ٣٨٠  | ٤١٦  | ٢٠٠٠        | ١١          |     |
| ١٢ | ١٩٨٠        | ٢            | -                   | ٣٢٥  | ٣٢٧  | ١٩٨٠        | ١٢          |     |
| ١٣ | ١٩٥٦        | ٣            | ٢٤٣                 | ٢٩٤  | ٣٧٤  | ١٩٥٦        | ١٣          |     |

( )

|  |  |  |  |
|--|--|--|--|
|  |  |  |  |
|--|--|--|--|

( )

|   |  |  |
|---|--|--|
| ١ |  |  |
| ١ |  |  |
| ١ |  |  |

( )

|   |   |   |   |
|---|---|---|---|
| - | - | - | - |
|   |   |   |   |

-: ( -

( )

:

-: -

( 2007 WAMOA)      .

-: -

( )

-: (

.( )

-: ( -

(% )      (

. ( - )

(

( - ) .(% )

(

(% )

( - )

-: ( -

(

(% )

( )      ( )      ( )

.( )

(% ) (

( .. )

( - ) ( - )

(

(% )

( - )

(

( )

( ) ( )

( - ) ( % )

( )

( .. )

(

( - )

( -

(

( )

( - )

(

(U Shape)

( - )

(

( - )

(

(

/

( )

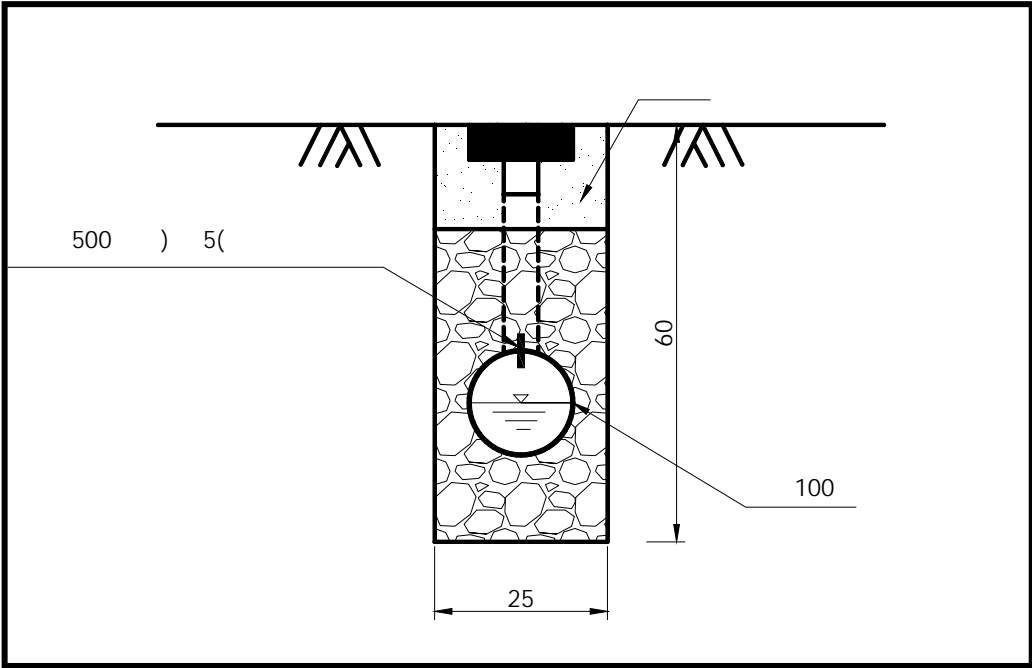
( )

( / )

(

(

( )



( )

(

:

-:



(أ)

(ب)

(ج)

(د)

(هـ)

(و)

(ز)

(ح)

(ط)

(ق)

(أ) ( )

(ب)

(ج)

( ) ( )

(

( )

( )

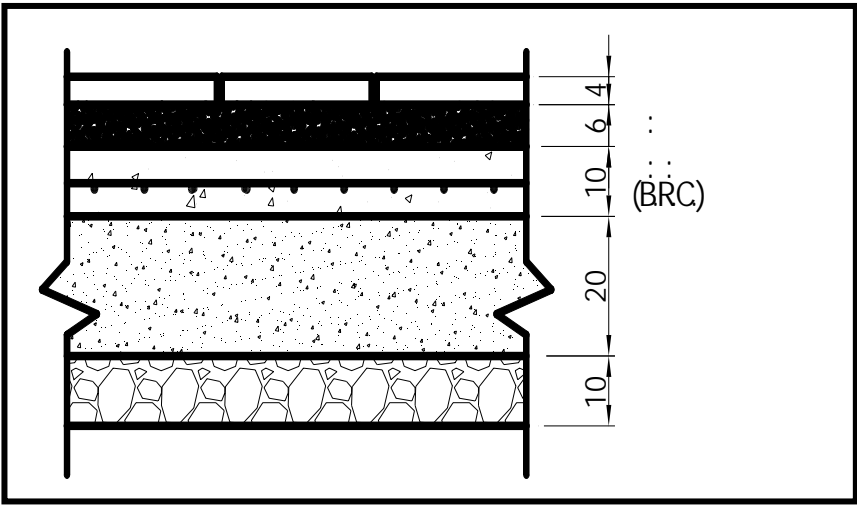
:

(

(

(

(



(

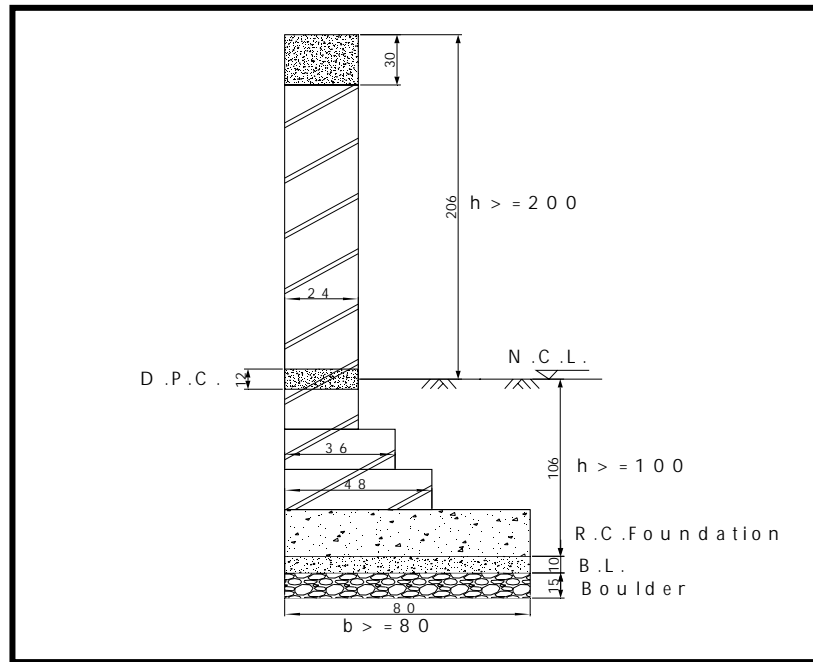
(

( )

(

(

(



( )

"( )

"

\*

\* الحمداني ، د. موفق و عباس، د. نوري، ١٩٨٢م، "المستحدثات التربوية"، بغداد، المكتبة الوطنية، ص٤٥.

"

"

\*

"

"

\*

"

"

\*

"

"

\*

"

"

\*

\*UNESCO, 1996,"Evaluation of the Small Secondary Schools Project in Thailand (Building Evaluation)", published by the UNESCO principal regional office for Asia and Pacific.

\* WAMOA, Washington Association of Maintenance and Operations Administrators, 2007, " Study of School Deficiency Repair Grant and Facilities Maintenance Operations in Washington School Districts", Washington.

\*Whitehurst, Grover J., 2003, "Planning Guide for Maintaining School Facilities", the National Center for Education Statistics and the National Cooperative Education Statistics System, Washington.

( )

جامعة بابل/ كلية الهندسة  
قسم الهندسة المدنية  
إلى/ السيد المعلم المحترم  
استمارة استبيان

عنوان البحث:

هدف البحث:

....

.....

:

:

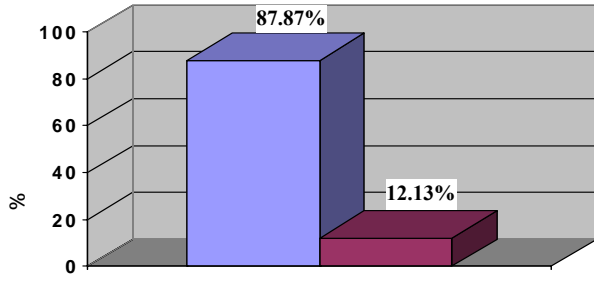
:

:

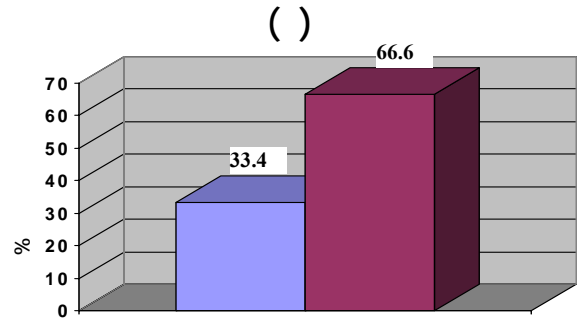
(✓)

(  )

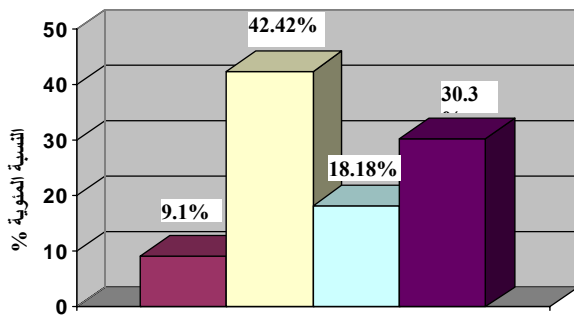
..... :



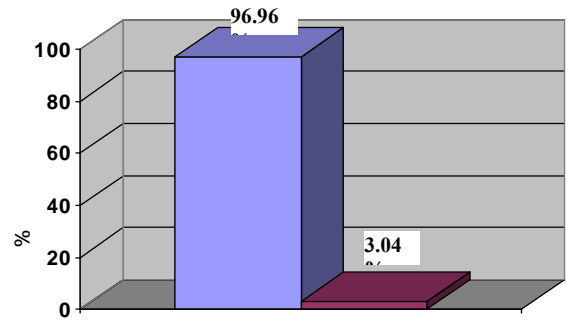
( - )



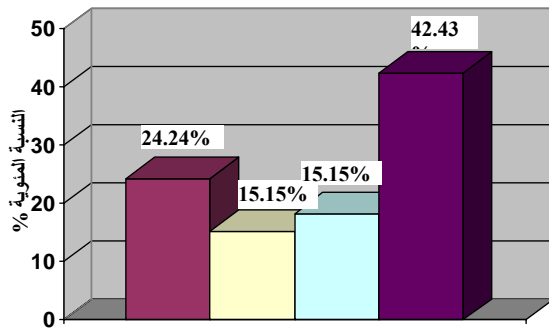
( - )



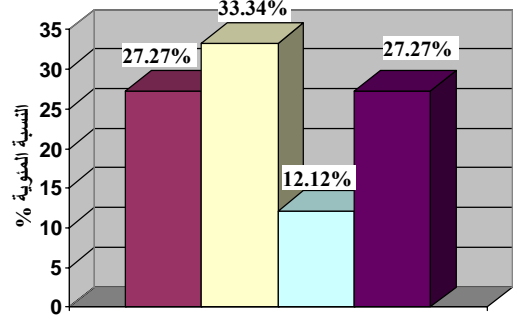
( - )



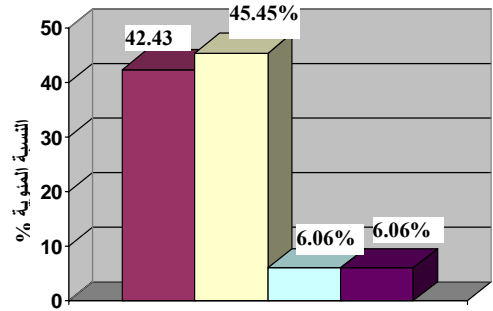
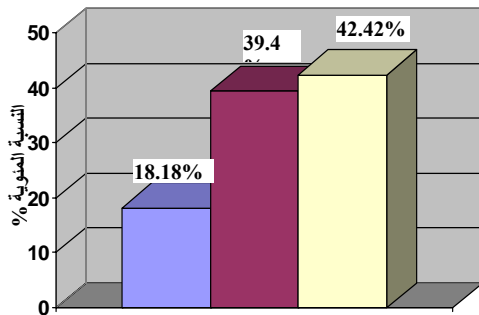
( - )



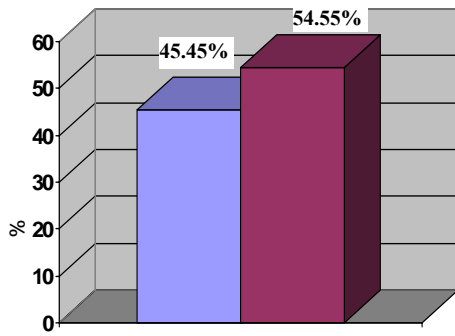
( - )



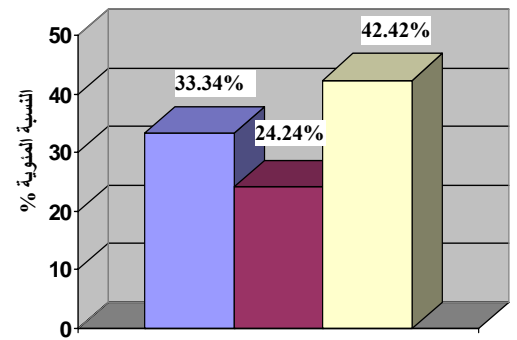
( - )



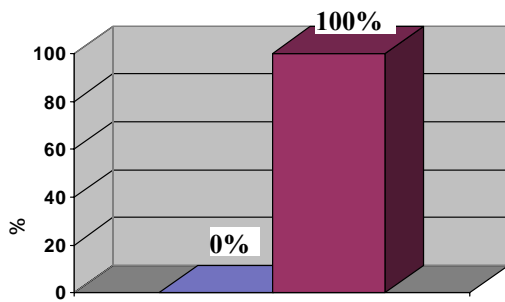
( - )



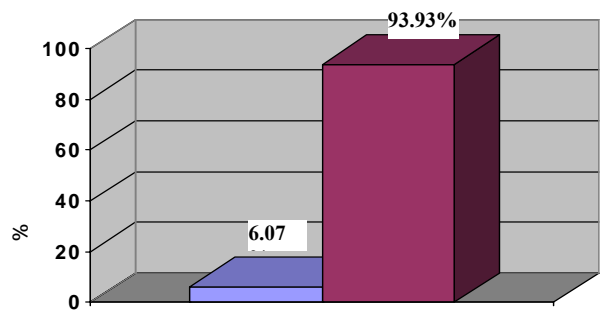
( - )



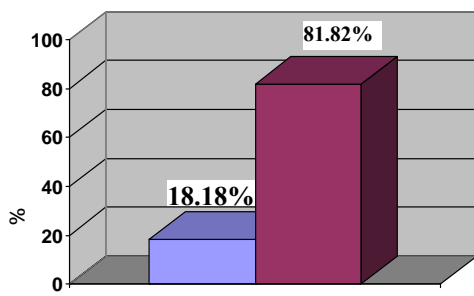
( - )



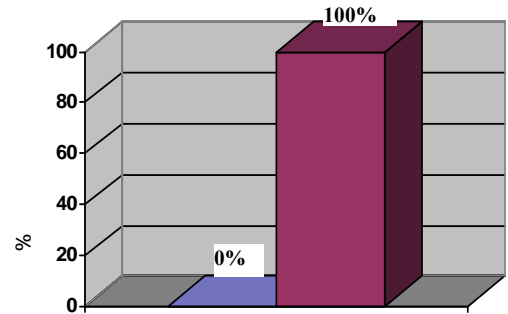
( - )



( - )



( - )

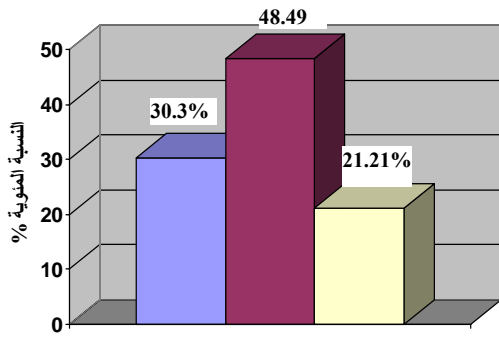


( )

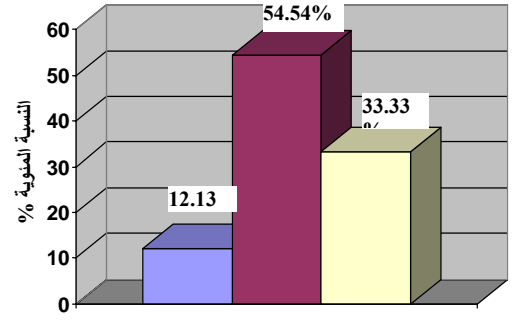
( - )

( - )

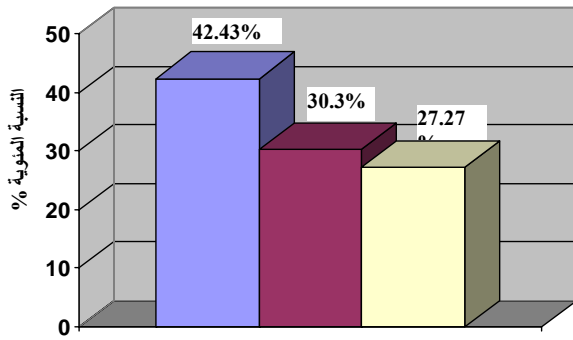
( )



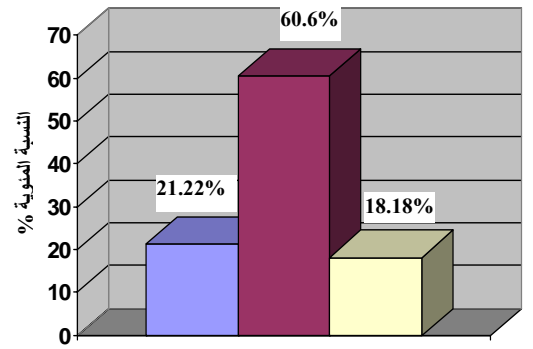
( - )



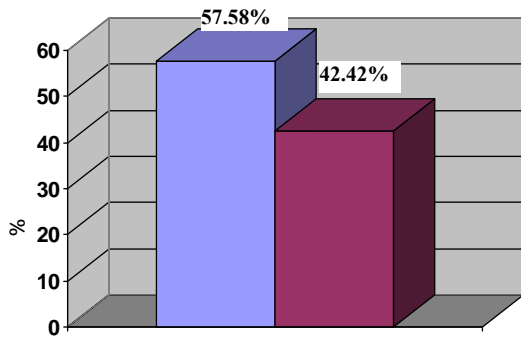
( - )



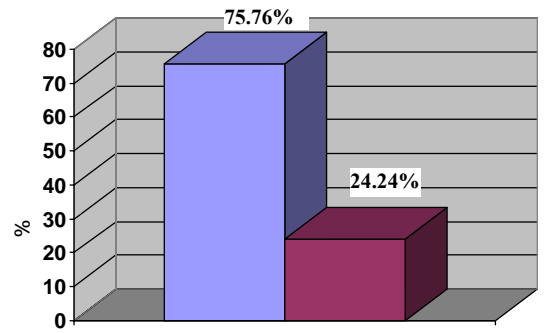
( - )



( - )

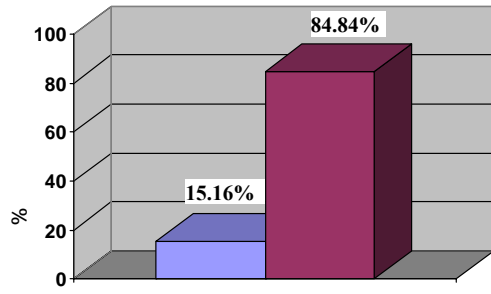


( - )

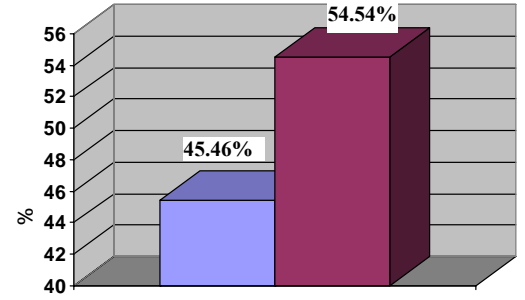


( - )





( - )



( - )

( )



صورة رقم (٢)



صورة رقم (١)



صورة رقم (٤)



صورة رقم (٣)



صورة رقم (٦)



صورة رقم (٥)



صورة رقم (٨)



صورة رقم (٧)



صورة رقم (١٠)



صورة رقم (٩)

