



Ministry of Higher Education and Scientific Research
University of Babylon
College of Materials Engineering



User Interface & Common Icon

Lecture 6

Prepared by:

Assist. Lecturer Areej Abdulkareem

AbdulRaheem



07732584770



<https://classroom.google.com/c/ODU3NTY3MDEyMDg0?cjc=t56x3f7y>



Mat437.a.abdulkareem@uobabylon.com

Introduction



User Interface

The user interface is everything a person uses to communicate and interact with a computer or any electronic device, whether it's a program, operating system, or application. It typically consists of:

- Windows
- Buttons
- Menus
- Icons
- Dialog Boxes

User interface types

1. Graphical User Interface (GUI): This relies on images and icons, is easy to use, and doesn't require memorizing commands. Examples include desktop environments and programs like Word and Paint.
2. Text-Based Interface (CLI): This relies on typing text commands. It requires knowledge of commands and is faster for specialists , Examples include (Command Prompt and Terminal).



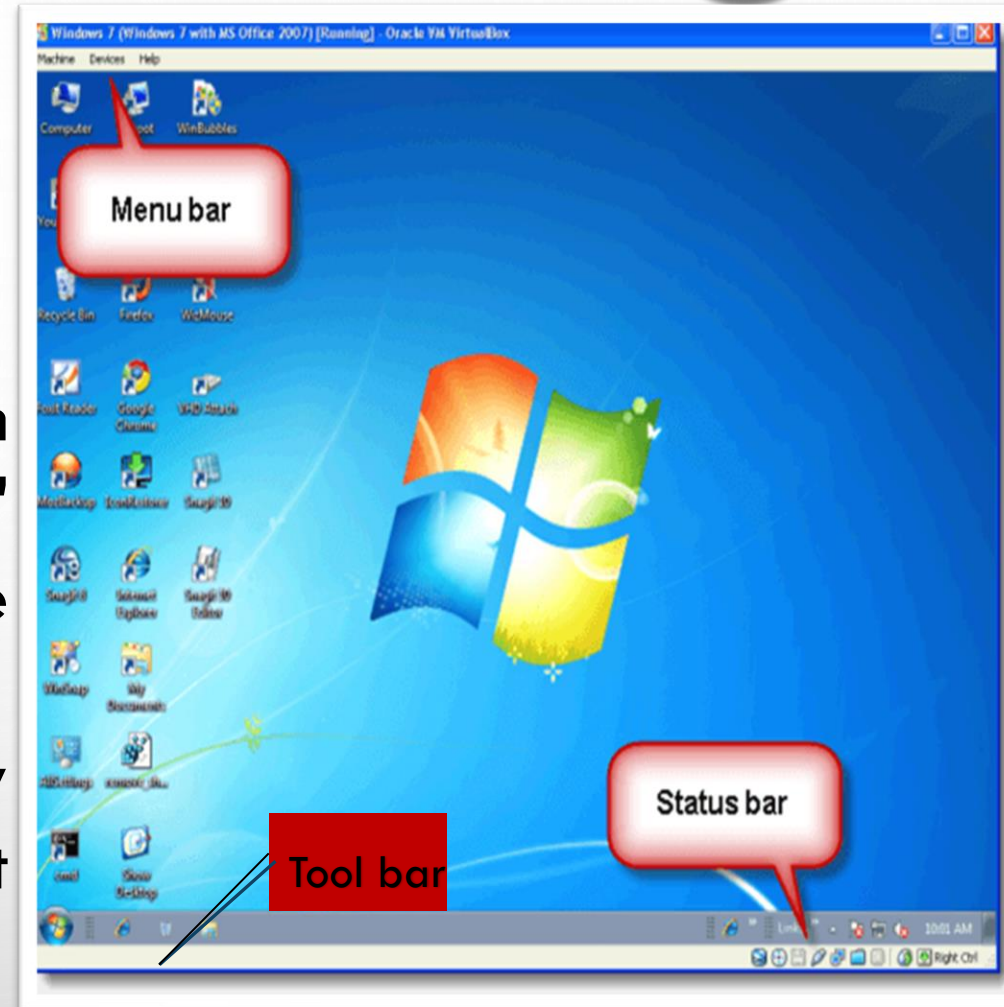
The importance of the user interface

- It makes using the computer easier.
- It reduces errors.
- It speeds up work completion.
- It makes learning easier for beginners.



Key Bar Graphical User Interface (GUI)

- 1- Menu Bar: Typically located at the top of an application window, it lists categories like "File," "Edit," and "View" to access most of the application's features and commands.
- 2- Tool bar: A row of buttons or icons usually positioned below the menu bar, providing fast access to frequently used tasks and tools.
- 3- Status Bar: A horizontal bar at the very bottom of the window that provides feedback on the current state of the app or document (e.g., zoom level, page number, or error messages).



A QUESTION WITH RAISED HANDS

What are Common Icons



Common Icons

These are simplified, standardized graphical symbols used in user interfaces (web, applications, devices) to quickly represent specific commands, files, or functions. They aim to enhance the user experience by providing immediate and rapid visual recognition of functions without the need to read text.



Examples of Icons in Computers



Folder Icon



File Icon



Battery Icon



Save Icon



Print Icon



Home Icon



Settings Icon



Wi-Fi Icon



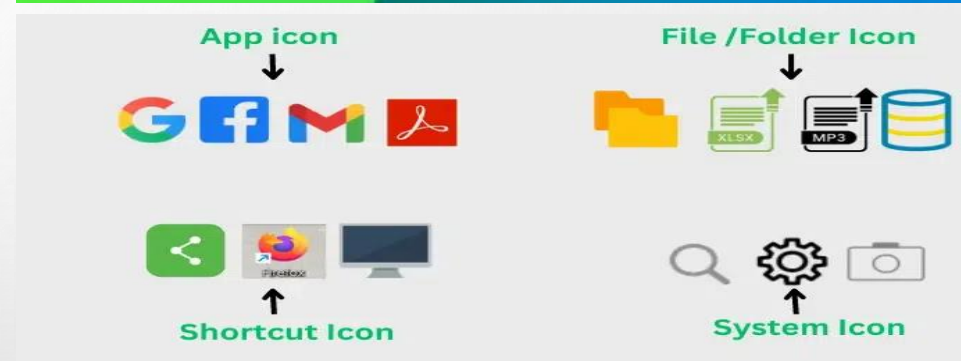
Search Icon



Volume Icon

Common Types of Computer Icons

- **Desktop Icons** : Represent files, folders, or programs, often saved on the desktop for quick access (This PC, Recycle Bin ,).
- **Applications Icons** : Graphical representations of software programs or apps (browser icons, document icons ,).
- **Systems Icons** : Icons that represent core system functions and tools.
- **Shortcut Icons** : Links to a file, folder, or application, usually identified by a small arrow in the corner.
- **Toolbar Icons** : Small icons within an app that represent specific actions, such as Save, Print, or Delete.



Benefits and Usage Common Icon

- **Quick Access:** Pinned applications on the taskbar or desktop icons enable immediate launching of frequently used items.
- **Visual Identification:** Makes it easy to identify file types (e.g., PDF, image, video) at a glance.
- **Organization:** Helps organize the desktop by grouping related items.
- **Workflow Efficiency:** Improves speed and simplifies interaction with the operating system.



Summary of the sex lecture

In this lecture, we learned about the types of computers, how they work, and what numerical systems are



SOURCES

- Computer Basics by Al-Khader Ali Al-Khader
- Technology in Action by Alan Evans, Kendall Martin, Mary Anne Poatsy.



Thank you

